



OpenPlant Isometrics Manager

Generate Intelligent Isometrics from Multiple Sources

Piping isometrics are among the most important deliverables from plant models. OpenPlant Isometrics Manager is a flexible, powerful application that runs independent from plant design applications to provide a cost-effective means for non-engineers to quickly create and manage isometrics.

The CONNECT Edition

The SELECT® CONNECT Edition includes SELECT CONNECT services, new Azure-based services that provide comprehensive **learning, mobility, and collaboration** benefits to every Bentley application subscriber. *Adaptive Learning Services* helps users master use of Bentley applications through CONNECT Advisor, a new in-application service that provides contextual and personalized learning. *Personal Mobility Services* provides unlimited access to Bentley apps, ensuring users have access to the right project information when and where they need it. *ProjectWise® Connection Services* allow users to securely share application and project information, to manage and resolve issues, and to create, send, and receive transmittals, submittals, and RFIs.

Independent Isometrics Production Increases Productivity

OpenPlant Isometrics Manager allows isometrics to be independently produced by document control or other supporting project personnel, freeing piping designers to focus on design activities. By managing isometric production through project-based rules, the software provides users with a way to easily generate isometrics from either OpenPlant ModelServer, an OpenPlant-based iModel, or other sources using a simplified interface, without the need for a complex design application. It also enables project teams to output in either DGN or RealDWG formats.

Rapid Project Startup

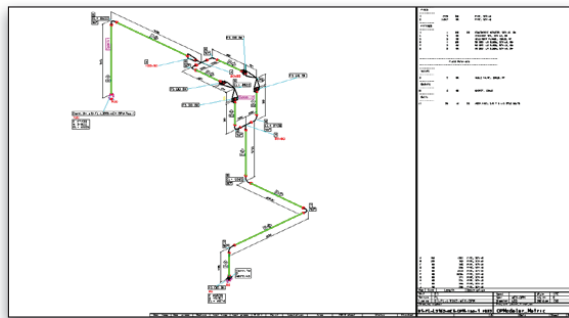
Quickly create isometrics styles for each project through the powerful, yet easy to use graphical user interface for isometric configuration. This eliminates the complexity and extensive time needed in other products that require switches, auxiliary configuration files, and more. Projects can begin faster, run more accurately, and address the needs of each organization more rapidly.

Automated Production for Higher Quality Isometrics

Increase the quality and accuracy of your isometric drawings with OpenPlant Isometrics Manager's ability to extract intelligent isometrics from multiple 3D sources. Generate virtually "no touch" isometrics utilizing the application's whitespace management engine that allows for improved drawing layouts as well as better dimension and label positioning, saving time with clear and legible isometrics. Automatically split isometrics into multiple sheets based on different criteria to quickly generate construction deliverables based on project requirements.

Integrate Users and Projects to Increase Collaboration

OpenPlant Isometrics Manager integrates with ProjectWise®, to allow finalized isometrics to be posted directly into the document repository with automatic version control. This enables team members, regardless of location, to access the most current versions of these contracted deliverables.



An example of a simple interface for isometric drawing creation.

The application allows users to improve collaboration, personal productivity, and information sharing by signing in as a connected user and associating files with Connected Projects. Connected Users can access personalized learning, communities, notifications, and project information. Connected Projects provide project level reporting including which Connected Users are working a project, how much time they are spending on a project, and what Bentley applications they are using.

With CONNECT services, learn to master your Bentley applications and get work done at any time from any place. Empower your teams to connect and collaborate.

Intelligent Isometrics Provide Useful Data for the Entire Project Lifecycle

OpenPlant Isometrics Manager automatically creates an intelligent file, which includes the graphics and associated piping data. This allows users to search and query data within these documents without the need for access to the plant design model.

Rule-based Management Ensures Accurate, Up-to-date Isometrics

Product isometrics with OpenPlant ModelServer based on design states such as "Issued for Construction." Rules can be defined to control what type of isometric to produce and, more importantly, whether an isometric can be created if the components are not at a predetermined design state. Time spent checking and reviewing isometrics is now focused on the proper documents where the status is known.

Multiple Styles Provide Fit-for-purpose Drawings

OpenPlant Isometrics Manager provides for the creation of many isometric styles for specific purposes in the project, each with its own set of rules for design status and layout types. The resulting isometric drawings can be placed into their own folder within ProjectWise for versioning and distribution to a globally distributed project team. Delivered styles include As-Built, Check, IFC, Stress, and Tracing. Additional user-defined styles can be created to suit project requirements. ProjectWise provides for remote access, allowing users, such as fabricators, to see the most current information.

System Requirements

Refer to the 'Requirements' section of the OpenPlant Isometrics Manager ReadMe file:

www.bentley.com/OpenPlant

Find out about Bentley at: www.bentley.com

Contact Bentley
1-800-BENTLEY (1-800-236-8539)
Outside the US +1 610-458-5000

Global Office Listings
www.bentley.com/contact

OpenPlant Isometrics Manager At-A-Glance

Interoperability

- Generate PCF files to pass data to existing fabrication systems
- Produce isometrics from OpenPlant, AutoPLANT®, and AutoPIPE®
- Create isometric deliverables in DGN or RealDWG formats
- Works with OpenPlant and AutoPLANT Central Management
- Use a common set-up and configuration through ProjectWise managed Workspaces
- Store similar isometrics in a central location
- Examine components from the same model using different views
- Navigate between models and isometrics

Design Model Component Information

- Perform intelligent queries against components to find those with identical information to 3D design models
- View relevant data available in other areas of the design and construction process

Isometric Production

- Separate isometric production from piping design applications
- Control isometric generation by status settings
- Generate different isometric production log files

Usability

- Easy-to-use interface designed for non-piping users – no need to understand cryptic switches, auxiliary file structures, or settings

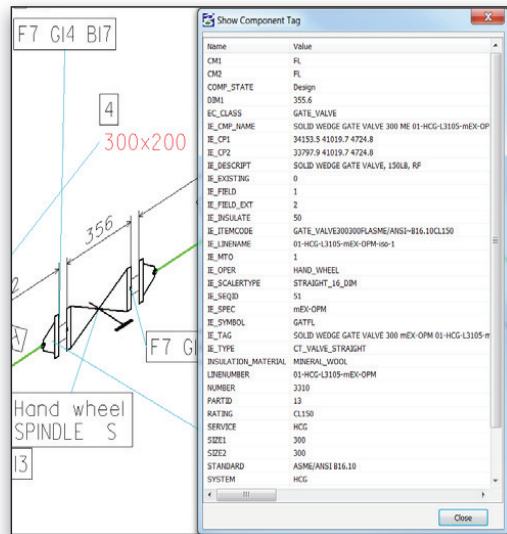
- Straightforward query tool to easily search for a specific group of components, such as a line number
- Project-driven drawing output and bill-of-material definitions

Isometrics Drawing and Style Configuration

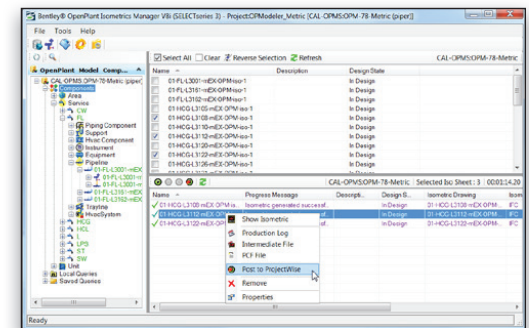
- Intelligent isometric drawings include graphics and piping data
- Easy-to-configure isometrics styles – no more switches to remember
- User-configurable drawing layouts and reporting
- Simple isometrics symbols creation using MicroStation cells
- Customized drawing attributes for additional pipeline information
- Fully configurable bill-of-material layout

ProjectWise Integration

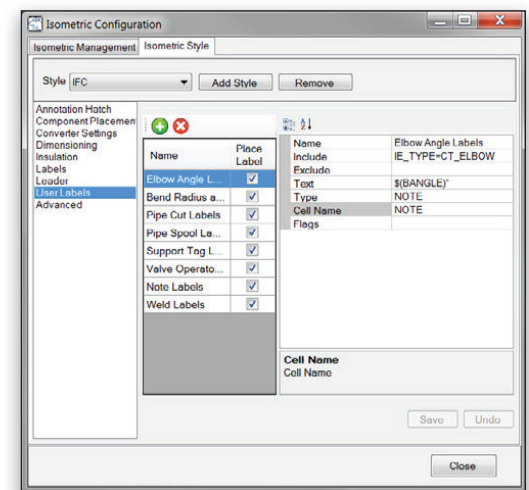
- Manage multiple projects from a single model or data source
- Include metadata with documents
- Save user queries locally or to ProjectWise for team access
- Edit isometric name expressions
- Create isometrics based on design-state
- Browse element information or specific components or sets of components



OpenPlant Isometrics Manager accesses and manages the full information about components in the isometric.



Using a direct connection to ProjectWise provides integral document management through OpenPlant Isometrics Manager.



GUI-driven configuration tools provide simple isometric configuration.